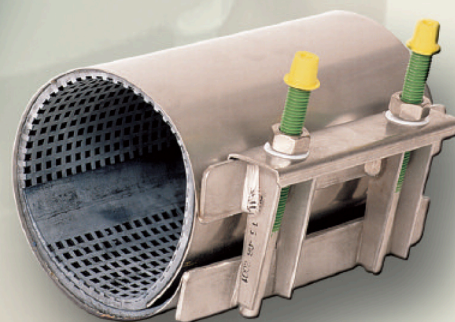
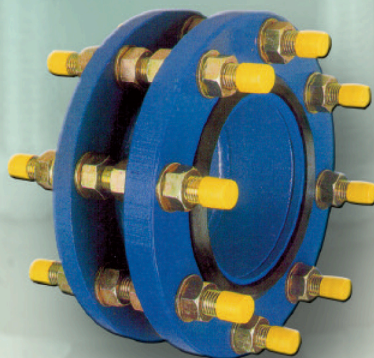
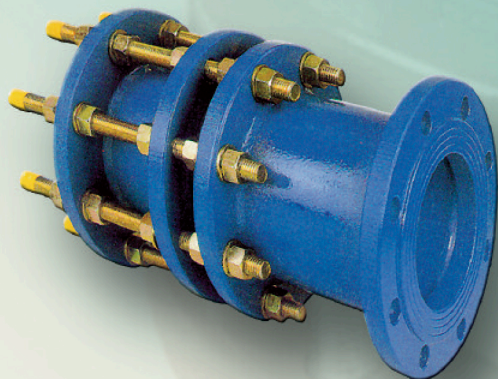
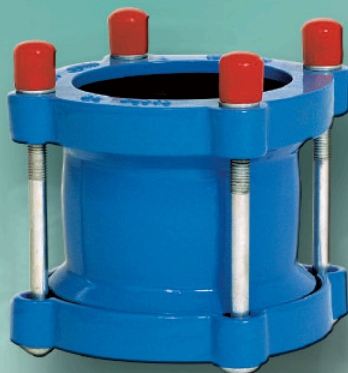
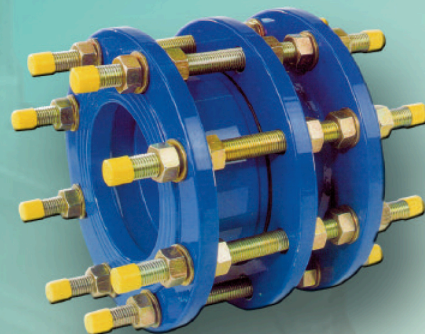
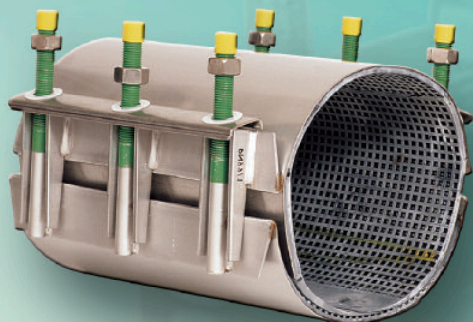




# DINICOLA®

MANUFACTURING - WATER VALVES - INDUSTRIAL VALVES - PENSTOCKS AND GATES - RADIAL GATES - SPECIAL APPLICATIONS

## JOINTS, CLAMPS AND COUPLINGS



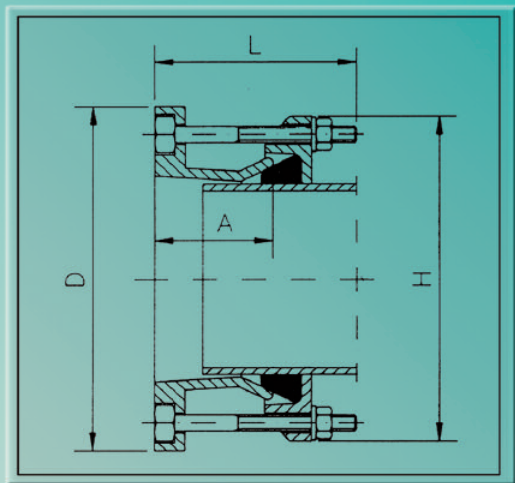
Via Mazzini, 11 - 66020 San Giovanni Teatino - Chieti - ITALY

+39 085 904 9480

dinicolainfinam@gmail.com - sales@dinicolavalves.com

www.dinicolavalves.com





**BODY:** Ductile Iron GGG 40 - Galvanized Steel for  $\varnothing > 300$   
**END RINGS:** Ductile Iron GGG 40 - Galvanized Steel for  $\varnothing > 300$   
**GASKET:** NBR rubber  
**BOLTS:** Stainless Steel or Galvanized Steel  
**NUTS AND WASHERS:** Stainless Steel or Galvanized Steel

## Characteristics

Designed to accommodate pipes with different outside diameters with no gasket replacement, they reduce stocks as one coupling is able to connect steel, ductile iron, PVC, cast iron and asbestos cement pipes.

- Perfect Sealing even on irregular pipesurfaces
- Maximum Axial translation of pipes: 5 mm
- Coating of body and end rings with Rilsan eliminates the need for further protection such as one-site wrapping thanks to high adesion and impact resistance.
- Maximum working pressure: 16 bar
- Total angular deflection of +/- 3 degrees allowing for pipeline movement such as ground settlement.
- Rubber gasket and coating suitable for drinkable water
- Flange drillings compatible with both NP 10 and NP 16

## Description

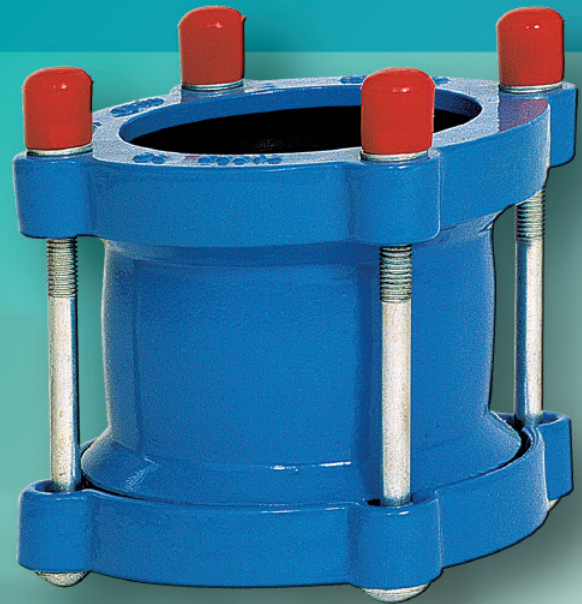
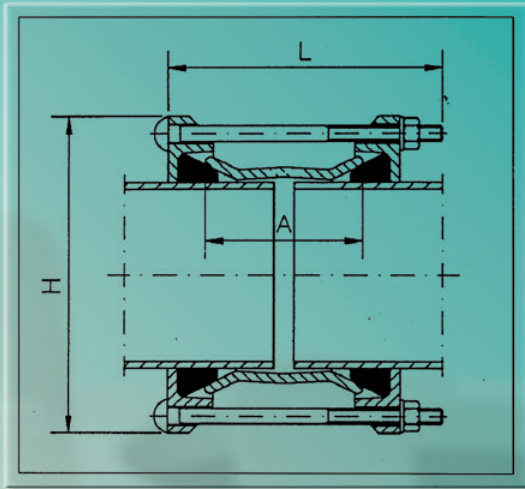
Universal pipe flange adaptor specially designed to connect plain-ended pipes of different outside diameters and materials eliminating the need for dismantling joints.

Therefore the costs of installation are reduced thanks to the easy and quik assembly also in difficult conditions.

Note: Flange Drilling compatible with both NP 10 and NP 16

| PIPENOM |      | FLANGE DRILLING | OD Range |     | NP    | BOLT       |    | H   | A  | D   | WEIGHT (Kg.) |
|---------|------|-----------------|----------|-----|-------|------------|----|-----|----|-----|--------------|
| mm      | inch |                 | (mm.)    |     |       | Lenght     | n. |     |    |     |              |
| 50      | 2    | 50              | 59       | 72  | 10/16 | M 12 x 110 | 2  | 165 | 75 | 165 | 3,3          |
| 65      | 2,5  | 60/65           | 72       | 85  | 10/16 | M 12 x 110 | 2  | 187 | 75 | 180 | 3,8          |
| 65      | 2,5  | 80              | 88       | 103 | 10/16 | M 12 x 110 | 2  | 200 | 75 | 180 | 3,78         |
| 80      | 3    | 65/80/100       | 109      | 128 | 10/16 | M 12 x 115 | 4  | 222 | 75 | 190 | 490          |
| 100     | 4    | 100             | 132      | 146 | 10/16 | M 12 x 115 | 4  | 227 | 75 | 214 | 4,95         |
| 125     | 5    | 125/150         | 138      | 153 | 10/16 | M 12 x 115 | 4  | 287 | 75 | 250 | 7,2          |
| 125     | 5    | 125/150         | 159      | 182 | 10/16 | M 12 x 115 | 4  | 287 | 75 | 250 | 7,1          |
| 150     | 6    | 150             | 192      | 210 | 10/16 | M 12 x 115 | 4  | 287 | 75 | 278 | 7,8          |
| 175     | 7    | 175/200         | 218      | 235 | 10/16 | M 12 x 110 | 4  | 340 | 70 | 300 | 10           |
| 200     | 8    | 200             | 250      | 267 | 10/16 | M 12 x 110 | 4  | 340 | 70 | 324 | 8,6          |
| 225     | 9    | 225/250         | 272      | 289 | 10/16 | M 12 x 120 | 6  | 402 | 82 | 406 | 16,5         |
| 250     | 10   | 250             | 315      | 332 | 10/16 | M 12 x 120 | 6  | 406 | 82 | 406 | 14,5         |
| 300     | 12   | 300             | 322      | 339 | 10/16 | M 12 x 120 | 6  | 458 | 82 | 452 | 19,5         |
| 300     | 12   | 300             | 332      | 349 | 16    | M 12 x 135 | 8  | 462 | 92 | 463 | 23           |

\* We reserve the right to implement modifications without notice



**CORPO:** Acciaio forgiato  
**ANELLI:** Ghisa sferoidale GGG40  
**GUARNIZIONE:** Gomma NBR  
**VITI:** Acciaio inox o acciaio galvanizzato  
**BULLONI E RONDELLE:** Acciaio inox o acciaio galvanizzato

## Caratteristiche

Progettati per connettere tubi con differente diametro esterno, senza sostituzione di guarnizioni; essi danno la possibilità di ridurre gli accumuli di magazzino in quanto un solo giunto è in grado di connettere tubi in acciaio, ghisa, PVC, amianto e cemento.

- Tenuta perfetta anche in caso di superfici irregolari;
- Massima traslazione assiale dei tubi: 10 mm;
- Il rivestimento del corpo e degli anelli in RILSAN elimina automaticamente qualsiasi ulteriore necessità di protezione, come ad esempio il rivestimento in loco; questo grazie ad un'alta adesione e resistenza ad impatto;
- Massima pressione di esercizio: 16 bar
- Flessione angolare totale di +/- 6 gradi permettendo un gioco ai tubi in caso di assestamenti del terreno.
- Guarnizioni in gomma e rivestimento adatto all'uso in acqua potabile.

## Descrizione

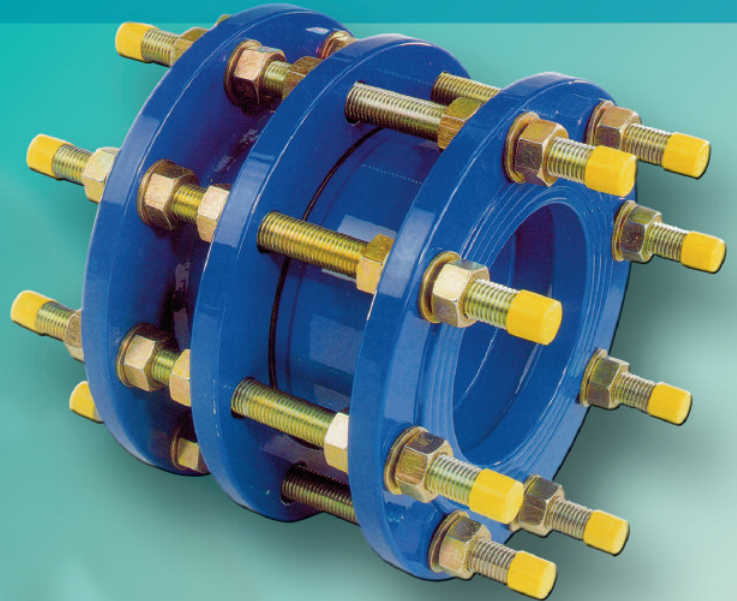
Giunti adattabili universali atti a connettere tubi con differente diametro esterno e differenti materiali, ma aventi la stessa pressione nominale.

I costi di installazione sono ridotti grazie ad un'assemblaggio facile e veloce anche in condizioni non favorevoli.

| DIAM. NOM. |      | DIAM. ESTERNO |     | PN    | BULLONI    |    | H   | A   | PESO (Kg.) |
|------------|------|---------------|-----|-------|------------|----|-----|-----|------------|
| mm         | inch | (mm.)         |     |       | Lunghezza  | n. |     |     |            |
| 40         | 1,5  | 48            | 60  | 10/16 | M 12 x 175 | 2  | 165 | 100 | 2,8        |
| 50         | 2    | 59            | 72  | 10/16 | M 12 x 175 | 2  | 180 | 95  | 3,3        |
| 65         | 2,5  | 72            | 85  | 10/16 | M 12 x 175 | 3  | 180 | 95  | 3,4        |
| 80         | 3    | 88            | 103 | 10/16 | M 12 x 175 | 4  | 190 | 95  | 4,2        |
| 100        | 4    | 109           | 128 | 10/16 | M 12 x 175 | 4  | 214 | 95  | 5,1        |
| 125        | 5    | 132           | 146 | 10/16 | M 12 x 175 | 4  | 250 | 100 | 8,4        |
| 125        | 5    | 138           | 153 | 10/16 | M 12 x 175 | 4  | 250 | 95  | 5,5        |
| 150        | 6    | 159           | 182 | 10/16 | M 12 x 200 | 4  | 278 | 105 | 7,9        |
| 175        | 7    | 192           | 210 | 10/16 | M 12 x 220 | 4  | 300 | 130 | 9,9        |
| 200        | 8    | 218           | 235 | 10/16 | M 12 x 220 | 4  | 324 | 130 | 10         |
| 200        | 8    | 230           | 247 | 10/16 | M 12 x 220 | 5  | 357 | 130 | 19,5       |
| 225        | 9    | 250           | 267 | 10/16 | M 12 x 220 | 6  | 406 | 130 | 19,8       |
| 250        | 10   | 272           | 289 | 10/16 | M 12 x 220 | 6  | 406 | 130 | 17         |
| 300        | 12   | 315           | 332 | 10/16 | M 12 x 220 | 8  | 440 | 165 | 24,8       |
| 300        | 12   | 322           | 339 | 10/16 | M 12 x 220 | 8  | 452 | 130 | 24,6       |
| 300        | 12   | 332           | 349 | 10/16 | M 12 x 220 | 8  | 463 | 130 | 26,5       |

\* La ditta si riserva il diritto di apportare modifiche senza preavviso.

- LONG PIECE:** Ductile Iron/ Galvanized or Stainless steel
- SHORT PIECE:** Ductile Iron/ Galvanized or Stainless steel
- MIDDLE FLANGE:** Ductile Iron/ Galvanized or Stainless steel
- SEALING RING:** NBR or EPDM
- STUD BOLT:** Galvanized Steel / Stainless Steel
- NUT:** Galvanized Steel / Stainless Steel
- WASHER:** **POLITENE** (Only for dielectric joints)



\* Dielectric Type is also available.

## Description

Dismantling joints designed to connect valves to flanged ended pipes allowing an easy disconnection of valves during replacement or maintenance. Dielectric type joints avoid the corrosion phenomena due to line stray currents.

## Characteristics

Designed for the delivery of potable water and liquids in general.

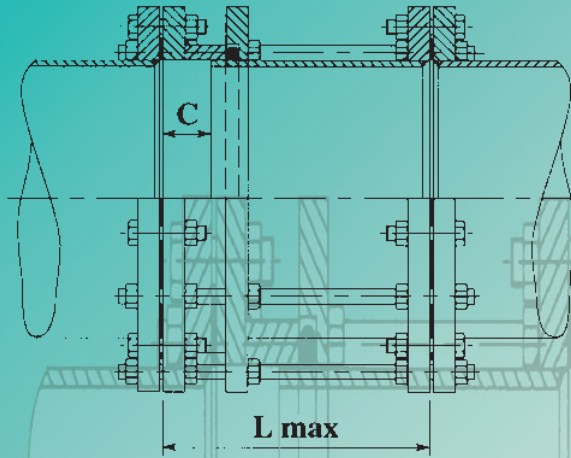
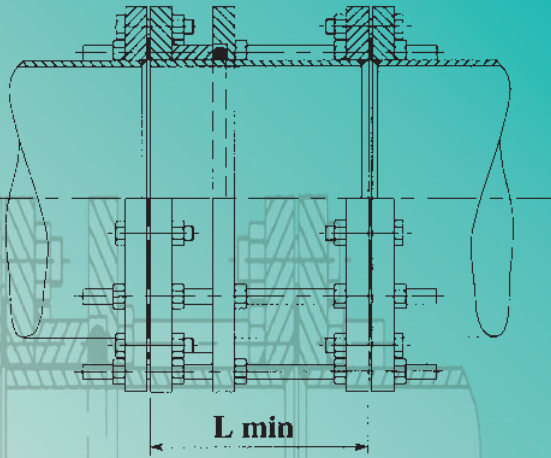
- Perfect Sealing on flanged pipes
- Maximum Axial translation of pipe: 3%
- Maximum working temperature: 180°
- Flame spray zinc coating 70 µn.

Contents valid only for Galvanized or Stainless Steel

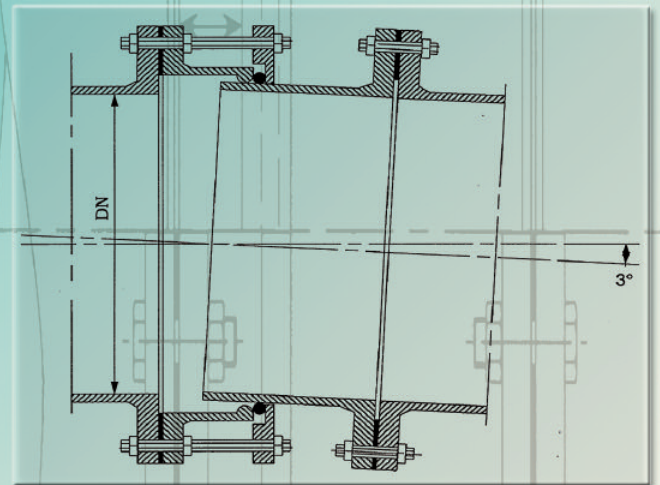
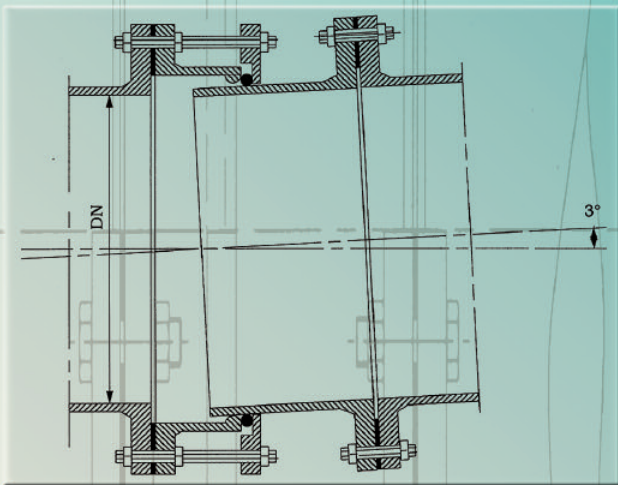
| DN   | PN 10  |        |           | PN 16  |        |           | Weight (Kg.) |
|------|--------|--------|-----------|--------|--------|-----------|--------------|
|      | L. min | L. max | C (corsa) | L. min | L. max | C (corsa) |              |
| 80   | 140    | 200    | 60        | 140    | 200    | 60        | 19 - 19      |
| 100  | 150    | 210    | 60        | 150    | 210    | 60        | 24 - 24      |
| 125  | 170    | 240    | 70        | 170    | 240    | 70        | 29 - 29      |
| 150  | 180    | 250    | 70        | 180    | 250    | 70        | 37 - 37      |
| 200  | 210    | 280    | 70        | 210    | 280    | 70        | 48 - 54      |
| 250  | 230    | 300    | 70        | 230    | 300    | 70        | 65 - 79      |
| 300  | 230    | 300    | 70        | 230    | 300    | 70        | 76 - 101     |
| 350  | 230    | 300    | 70        | 240    | 310    | 70        | 105 - 139    |
| 400  | 230    | 300    | 70        | 240    | 310    | 70        | 141 - 178    |
| 500  | 240    | 310    | 70        | 240    | 310    | 70        | 193 - 296    |
| 600  | 270    | 340    | 70        | 270    | 340    | 70        | 263 - 423    |
| 700  | 270    | 340    | 70        | 270    | 340    | 70        | 316 - 427    |
| 800  | 270    | 340    | 70        | 270    | 340    | 70        | 416 - 545    |
| 900  | 270    | 340    | 70        | 270    | 340    | 70        | 426 - 617    |
| 1000 | 270    | 340    | 70        | 270    | 340    | 70        | 606 - 767    |
| 1200 | 270    | 340    | 70        | 270    | 340    | 70        | 799 - 1124   |
| 1400 | 270    | 340    | 70        | 270    | 340    | 70        | 1100 - 1310  |

## CLOSED JOINT

## OPEN JOINT

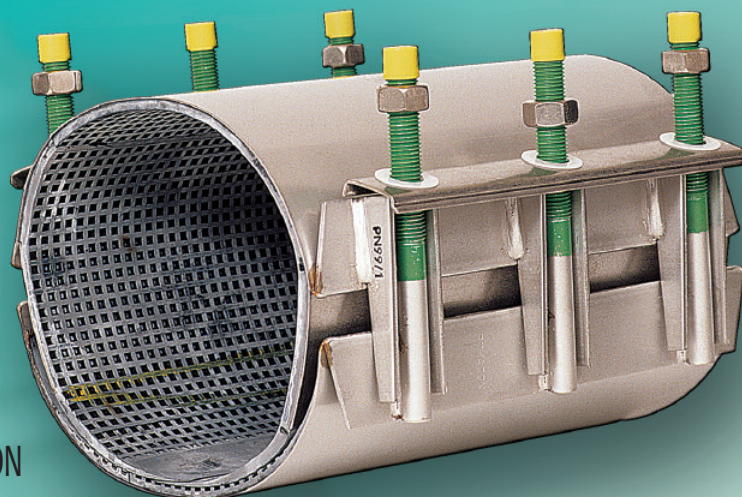


\*Joints can be supplied with special axial translation according to requirements



Contents valid only for Galvanized or Stainless Steel

| DN   | PN 25  |        |           | PN 40  |        |           | Weight (Kg.) |
|------|--------|--------|-----------|--------|--------|-----------|--------------|
|      | L. min | L. max | C (corsa) | L. min | L. max | C (corsa) |              |
| 100  | 210    | 280    | 70        | 210    | 280    | 70        | 34 - 34      |
| 125  | 210    | 280    | 70        | 210    | 280    | 70        | 46 - 46      |
| 150  | 210    | 280    | 70        | 210    | 270    | 70        | 56 - 56      |
| 200  | 260    | 330    | 70        | 270    | 340    | 70        | 82 - 102     |
| 250  | 270    | 340    | 70        | 270    | 340    | 70        | 112 - 150    |
| 300  | 270    | 340    | 70        | 270    | 340    | 70        | 147 - 204    |
| 350  | 270    | 340    | 70        | 300    | 370    | 70        | 209 - 296    |
| 400  | 370    | 340    | 70        | 330    | 400    | 70        | 267 - 414    |
| 500  | 380    | 350    | 70        | 340    | 430    | 90        | 395 - 585    |
| 600  | 310    | 400    | 90        | 340    | 430    | 90        | 566 - 888    |
| 700  | 280    | 350    | 70        | 340    | 430    | 90        | 620 - 1200   |
| 800  | 280    | 370    | 90        | 340    | 430    | 90        | 840 - 1320   |
| 900  | 310    | 400    | 90        | 340    | 430    | 90        | 1000 - 1460  |
| 1000 | 310    | 400    | 90        | 340    | 430    | 90        | 1390 - 1760  |



- BODY:** Stainless Steel AISI 304/ AISI 316
- CLAMPS:** Stainless Steel AISI 304/ AISI 316
- TIE-RODS:** Stainless Steel AISI 304/ AISI 316
- GASKETS:** NBR-S (50° Shore A) /SBR-S/ EPDM/ VITON

## Description

Stainless Steel repair clamp for repairs and connection on pipeline of different materials for aqueduct, irrigation, alimentary and industrial use.

## Characteristics

Designed for the delivery of potable water, liquids in general methane, gas, GPL and compressed air.

**CERTIFICATIONS AND OMOLOGATIONS:** ISO, DIN, DVGW, KIWA, BS, LEGGE 102

**THREADS:** According to ISO 7/1 Norm

### LIQUIDS

|  |                 |       |
|--|-----------------|-------|
| <b>Type 00</b><br>one tie-rod<br>one piece     | All diameters   | PN 10 |
| <b>Type 01</b><br>two tie-rod<br>one piece     | up to ED 90 mm  | PN 20 |
|  | up to ED 142 mm | PN 16 |
|  | up to ED 271 mm | PN 10 |
|  | up to ED 271 mm | PN 6  |
| <b>Type 02/3</b><br>three tie-rod<br>one piece | up to ED 364 mm | PN 16 |
|  | up to ED 545 mm | PN 10 |
|  | over ED 545 mm  | PN 6  |

### GAS

|  |                 |       |
|--|-----------------|-------|
| <b>Type 00</b><br>one tie-rod<br>one piece     | All diameters   | PN 1  |
| <b>Type 01</b><br>two tie-rod<br>one piece     | up to ED 271 mm | PN 6  |
|  | up to ED 271 mm | PN 4  |
| <b>Type 02/3</b><br>three tie-rod<br>one piece | up to ED 364 mm | PN 16 |
|  | up to ED 545 mm | PN 10 |
|  | over ED 545 mm  | PN 6  |

\* We reserve the right to implement modifications without notice



**FLANGES:** Cast Iron / Ductile Iron  
**MIDDLE PIPE:** Cast Iron / Ductile Iron  
**"O" RING:** NBR / EPDM  
**BOLTS:** Galvanized or Stainless Steel

## Description

Gibault couplings joint specially designed to connect plain-ended pipes of different outside diameters and materials having the same nominal size.

## Characteristics

Designed to accommodate pipes with different outside diameters. Gibault coupling joint is able to connect steel, ductile iron, PVC, cast iron and asbestos cement pipes.

- Maximum Axial translation of pipes: 20 mm
- Coating of body and end rings with Epoxy paint.
- Maximum working pressure: 16 bar
- Total angular deflection of +/- 9 degrees allowing for pipeline movement such as ground settlement.
- Rubber gasket and painting suitable for drinkable water.

### FOR DUCTILE IRON PIPES

| ND   | ED   | Type   | Weight |
|------|------|--------|--------|
| 60   | 77   | 60x9 M | 1,9    |
| 80   | 98   | 80x9   | 2,4    |
| 100  | 118  | 100x9  | 3,3    |
| 125  | 144  | 125x9  | 5      |
| 150  | 170  | 150x10 | 6,3    |
| 200  | 222  | 200x11 | 10     |
| 250  | 274  | 250x12 | 13     |
| 300  | 326  | 300x13 | 17     |
| 350  | 378  | 350x14 | 25     |
| 400  | 429  | 429    | 41     |
| 450  | 480  | 400x40 | 39     |
| 500  | 532  | 500x16 | 48     |
| 600  | 635  | 635    | 61     |
| 700  | 738  | 738    | 97     |
| 800  | 842  | 842    | 115    |
| 900  | 945  | 945    | 150    |
| 1000 | 1048 | 1048   | 160    |
| 1100 | 1152 | 1152   | 220    |



### FOR STEEL PIPES

| ND     | ED    | Type     | Weight |
|--------|-------|----------|--------|
| 1"     | 33,7  | 25x4     | 0,6    |
| 1" 1/4 | 42,4  | 25x8     | 0,7    |
| 1" 1/2 | 48,3  | 32x8     | 0,8    |
| 2"     | 60,3  | 40x10    | 1,1    |
| 2" 1/2 | 76,1  | 60x9 M   | 1,9    |
| 3"     | 88,9  | 70x9     | 2,3    |
| 4"     | 114,3 | 90x12    | 3,4    |
| 5"     | 139,7 | 125x9 M  | 5      |
| 6"     | 168,3 | 150x9    | 6,3    |
| 8"     | 219,1 | 200x11 M | 10     |
| 10"    | 273   | 250x12   | 13     |
| 12"    | 323,6 | 300x27   | 17     |
| 14"    | 355,6 | 300x27   | 22     |
| 16"    | 406   | 406      | 30     |
| 18"    | 457,2 | 400x28   | 33     |
| 20"    | 508   | 508      | 42     |
| 22"    | 558,8 | 500x28   | 46     |
| 24"    | 609,6 | 609      | 65     |
| 26"    | 660   | 660      | 82     |
| 28"    | 711,2 | 711      | 90     |
| 30"    | 762   | 762      | 85     |
| 32"    | 812,8 | 813      | 125    |
| 36"    | 914   | 914      | 160    |
| 40"    | 1016  | 1016     | 170    |